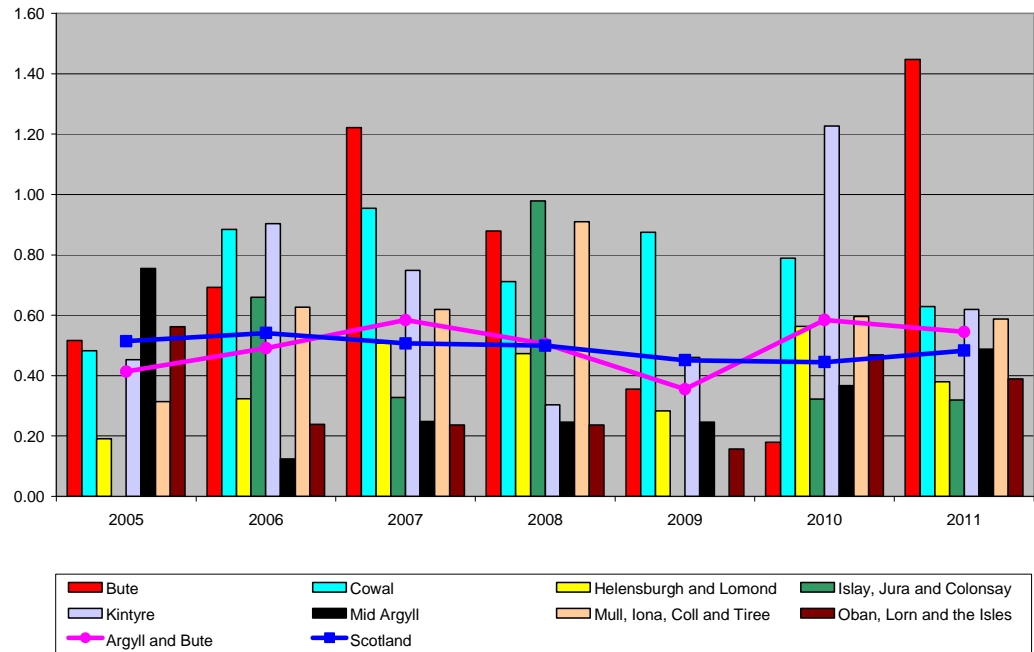
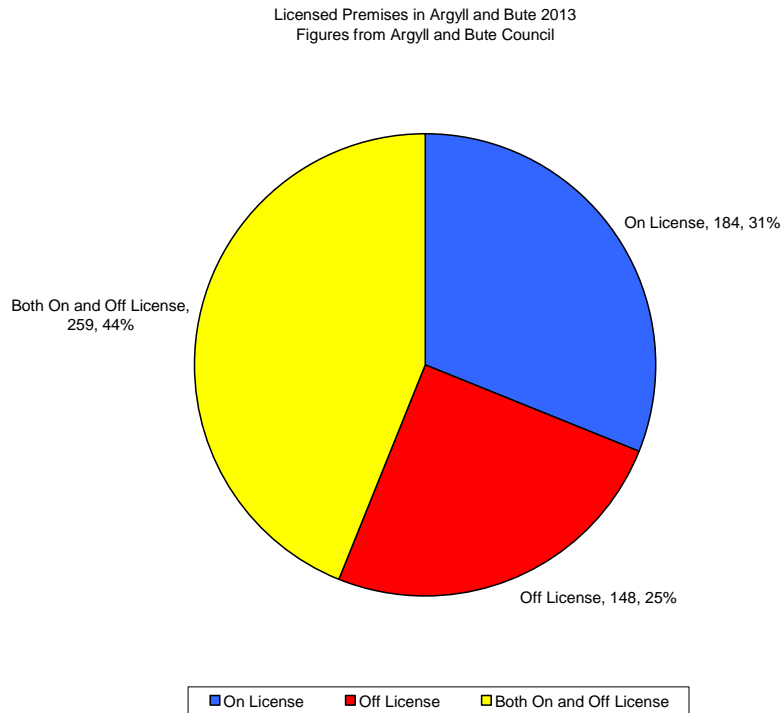

3.1



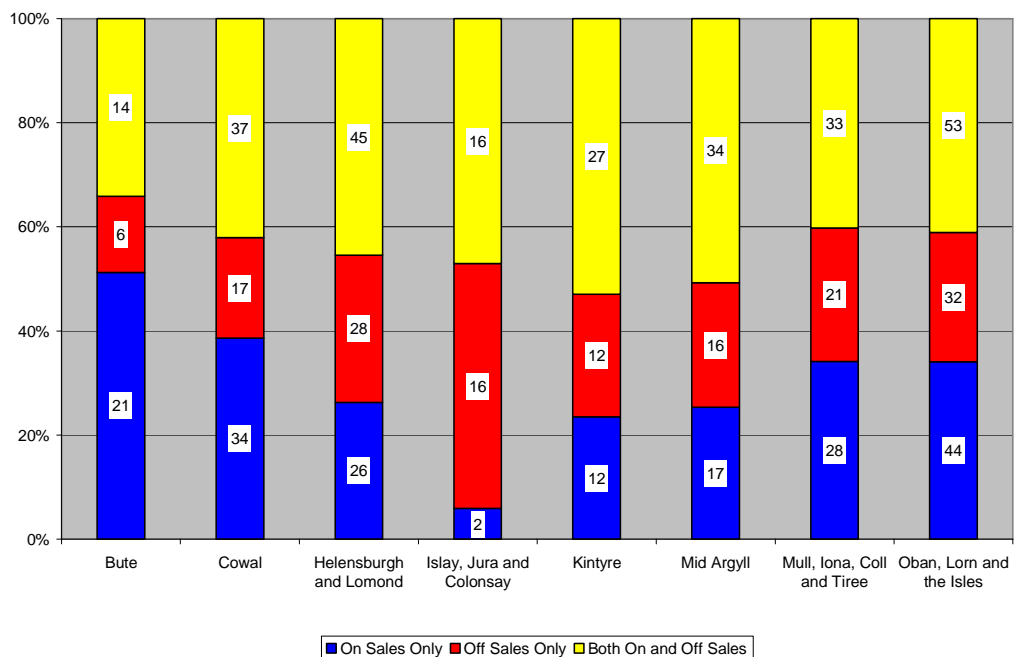
Each area has fluctuations from year to year. Only Kintyre closely mirrors the Argyll and Bute trend. There is no alteration in the Scotland rate, without further investigation it is difficult to say why this is the case.

3.3

There are 184 On License premises, 148 Off License premises and 259 sites that sell both On and Off License products.

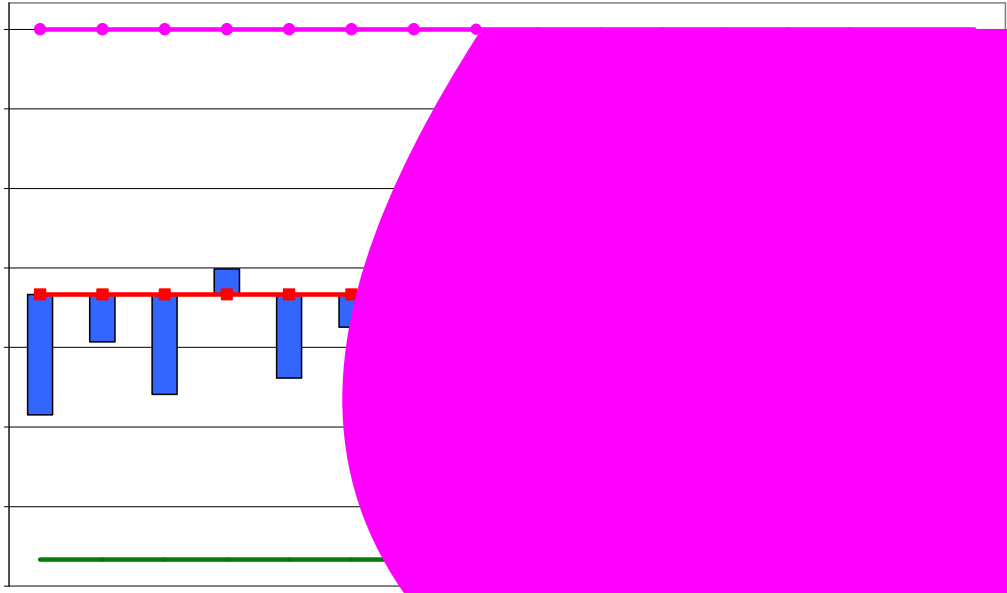


The following chart shows the percentage of premises in each locality the number displayed on each section of a column is the number of premises.



The following chart shows the provision of licensed premises per thousand of

There may be a relationship between the premises and alcohol mortality/admissions with the obvious exception of Mull, Iona, Coll and Tiree. Although a pattern may appear to exist (or not exist) it cannot be assumed without further analysis. Therefore, the data was broken down further into on, off and both



For further information contact:

Anne Ndlozi

Interim Information, Research and Performance Officer

Alcohol and Drugs Partnership

Tel: 01546 604948